



**Government of
South Australia**

Our Autism Strategy Action Plan 2025–2029

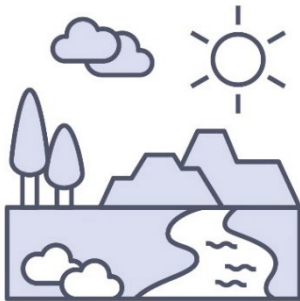
Easy Read version



Acknowledgement of Country



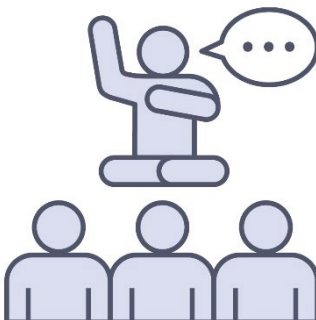
Aboriginal peoples are the First Peoples
of South Australia.



They have always looked after Country.
Country means the land, water, sky and
everything within them.



We respect the important connection that
Aboriginal peoples have with Country.



And we respect their Elders from the past and now.

How to use this plan



We are the Government of South Australia.

We wrote this plan.



We wrote some words in **bold**.

We explain what these words mean.

There is a list of these words on page 42.



This is a long document.



You don't need to read it all at once.

You can take your time.



You can ask someone you trust for support to:

- read this plan
- find more information.



This is an Easy Read summary of another plan.

It only includes the most important ideas.



You can find the other plan on our website.

www.autismstrategy.sa.gov.au

What's in this plan?

About the Autism Strategy Action Plan	6
Focus areas	9
How we will use the plan	14
Actions for 2025 to 2026	15
Actions from 2026 to 2029	25
Actions we will do every year	34
More information	41
Word list	42

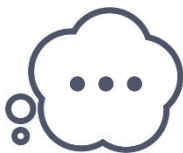
About the Autism Strategy Action Plan



This is our **Autism** Strategy Action Plan.

We just call it the plan.

Autism can affect how you:



- think



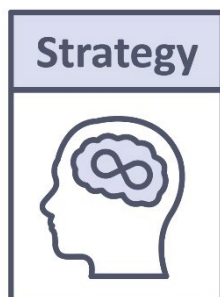
- feel



- communicate



- understand people.



The plan explains what we will do to achieve the goals in our Autism **Strategy** 2024–2029.

A strategy is a government plan for how to do things in the future.

We created the plan with:



- Autistic people



- families and carers.

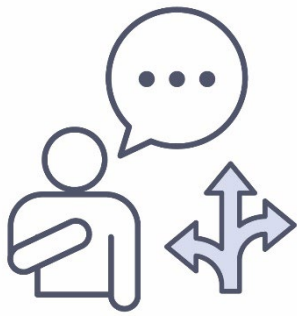


We asked people in the Autistic community what words they prefer to use to talk about themselves.

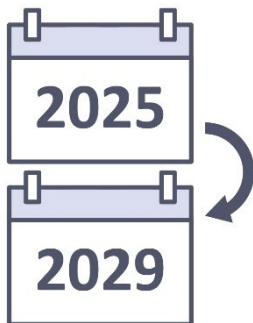


Many people told us they prefer the words 'Autistic people'.

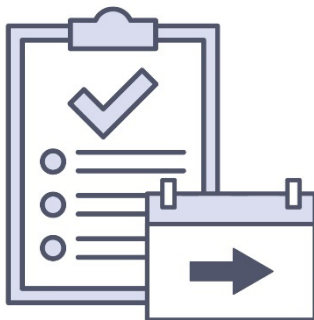
We use these words in the Autism Strategy Action Plan.



But we understand that each person might prefer different words for themselves.



We will use the plan from 2025 to 2029.

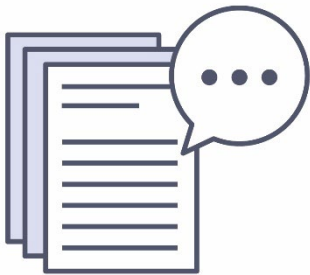


We will keep working on some of the actions after 2029.

Focus areas



Our actions follow the 7 focus areas from the Autism Strategy.



We explain the focus areas on the following pages.



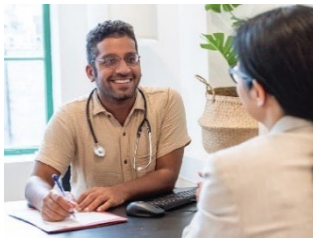
You can also find more Easy Read information about the focus areas in the Autism Strategy.

www.autismstrategy.sa.gov.au

1. Getting an autism diagnosis



We want to make it easier to get an autism **diagnosis**.



A diagnosis is when a doctor:

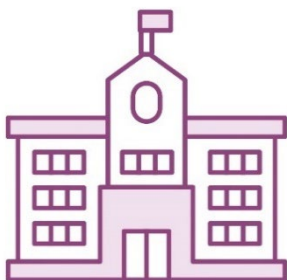
- checks your health
- says what health condition they think you have.

2. School and learning

We want Autistic people to have better experiences in:



- schools



- universities



- TAFEs.

3. Working and earning money

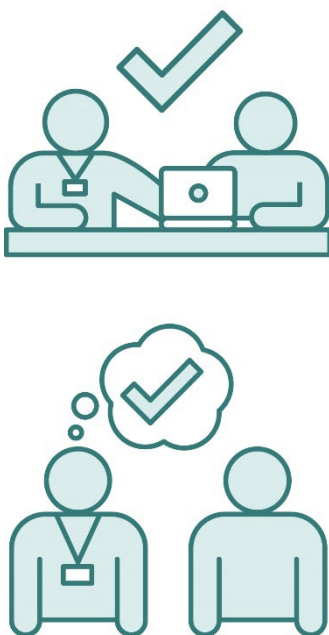
We want to make it easier for Autistic people to:



- change from school to work
- do well in their job.

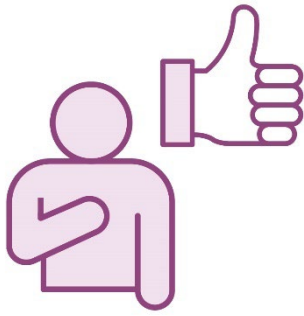
4. Finding and using services

We want services to:



- be easy for Autistic people to find and use
- understand how to support Autistic people.

5. Taking part in the community



We want community events and spaces to work well for Autistic people.

For example:



- transport



- sports events.

6. Health and mental health services



We want to make health and mental health services easier for Autistic people to use.



This includes better services far away from cities and towns.

7. The justice system



We want to make sure the **justice system** is fair for Autistic people.

The justice system includes:



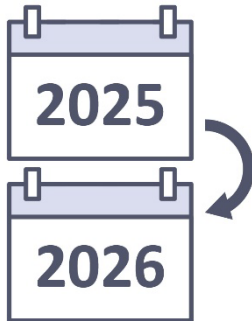
- prisons
- the courts
- police
- the law.

How we will use the plan

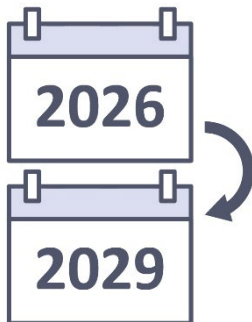


We created actions for our focus areas.

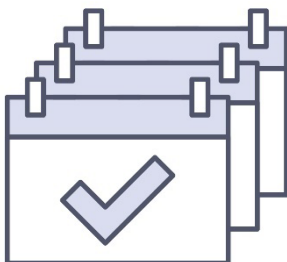
We will work on some actions:



- from 2025 to 2026



- from 2026 to 2029



- every year.

Actions for 2025 to 2026

1. Getting an autism diagnosis

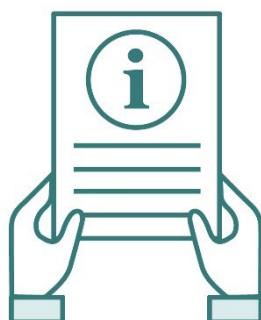


We will check how an autism diagnosis works.



We will create a group of professionals to give us advice.

For example, doctors.



We will share clear information about different ways to get a diagnosis.

We will share guides about autism with:



- Aboriginal communities



- **multicultural** communities.



Multicultural communities include people who:

- come from different cultures and backgrounds
- speak different languages.

We will also share:



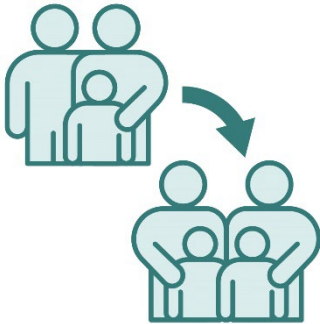
- new guides for schools about supporting Autistic girls



- information for families about services they can use after they get a diagnosis.



We will also train people who care for Autistic children in **out-of-home care**.



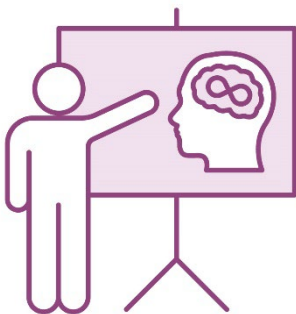
Out-of-home care is housing for a child who:

- can't live with their parents or carer
- might live with a different family.

2. School and learning



We will try new ways to support Autistic students in the classroom.



We will train teachers about autism.



We will create tools to help students change schools.

For example, from primary school to high school.



We will also make it easier for families to check if their children have autism.



We will offer these checks:

- in schools
- for free.

3. Working and earning money



We will train people who work for the government about autism.



We will check government rules about hiring people.



We will keep sharing information to help people understand:

- how Autistic people can help their business.
- how to include Autistic people in their business.



We will also share more information about services that support people with disability to find work.

4. Finding and using services

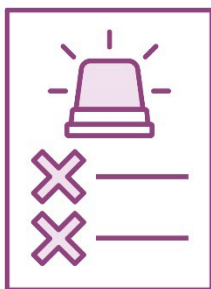


We will create guides to help service staff support Autistic families.



We will also check information and programs to help parents and carers.

5. Taking part in the community

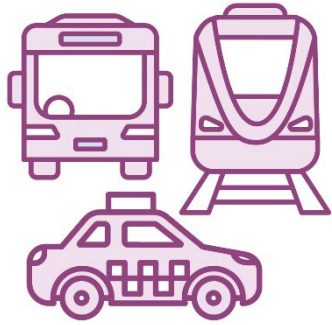


We will update the way we design alarms to make sure they work well for Autistic people.

For example, alarms that don't use bright lights or loud noises.



We will create rules about how to design spaces that work well for Autistic people.



We will think about what Autistic people need when we improve transport.

For example, buses, trains and taxis.



We will pay for programs that support Autistic people to take part in their community.



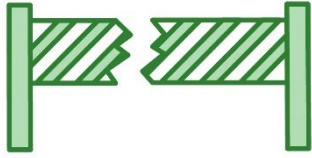
We will make sure places for sports and community activities are **accessible**.



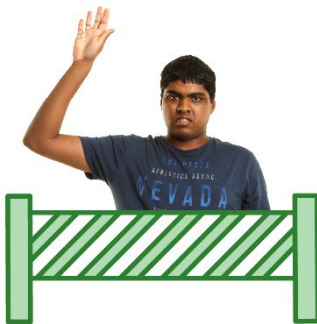
When something is accessible, it is easy to:

- find and use
- move around in.

6. Health and mental health services

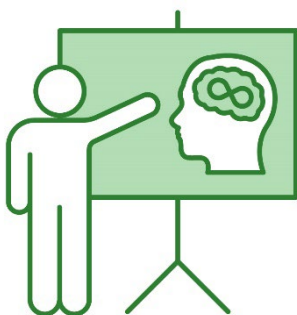


We will create resources to take away **barriers**.



A barrier is something that stops you from doing what you:

- need to do
- want to do.



We will also train health care professionals about autism.

For example:



- doctors



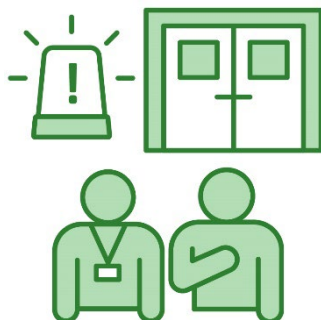
- nurses



- emergency services – like police and ambulance drivers.



We will make it easier for people to find their way around hospitals.



We will also create resources to help emergency departments at hospitals support Autistic people.

7. The justice system

We will give people autism training, including:



- police



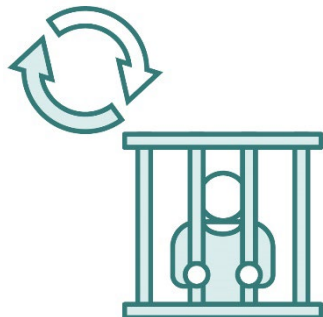
- prison staff



- court staff.



We will make sure court websites meet the needs of Autistic people.



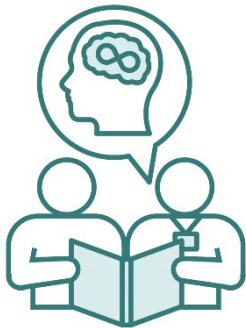
We will change some designs inside prisons to support Autistic people.

Actions from 2026 to 2029

1. Getting an autism diagnosis



We will look at how to make sure families don't pay too much for a diagnosis.

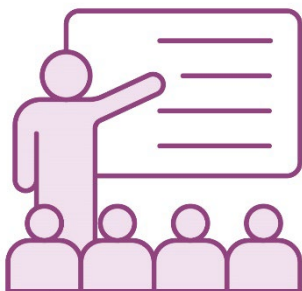


We will also test a program to support people after they get a diagnosis.

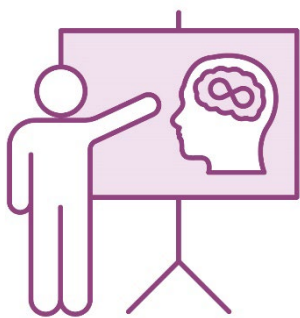
2. School and learning



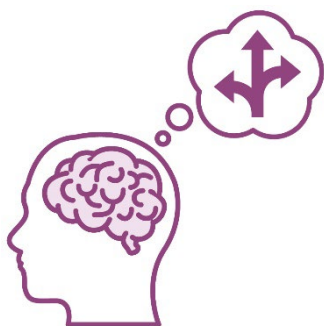
We will keep training teachers on how to support Autistic children in classroom activities.



We will create guides about designing classrooms that work well for Autistic students.



We will include autism training for teachers at university.



We will also provide teachers with training about **neurodiversity**.

Neurodiversity is the different ways people's brains can work.



This training will help make safe learning spaces for Autistic children.

3. Working and earning money



We will collect **data** about Autistic people who work in the government.



Data includes information and facts we collect to help us learn about something.



We will run programs to support the wellbeing of Autistic people who work in the government.



We will create programs that help Autistic people change from school to work.

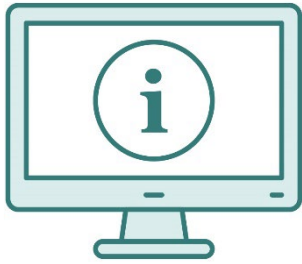


We will also use **grants** to help businesses hire and support Autistic people.

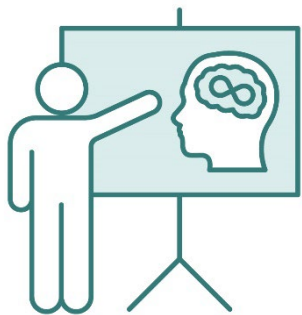


Grants are money from the government to pay for important work that helps others.

4. Finding and using services



We will create one main place online to keep information about autism.



We will keep training service staff about autism.



We will also check how well **Companion Cards** are working.

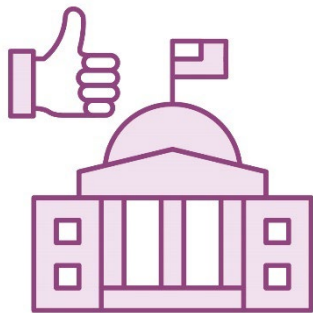


A Companion Card lets some people with disability take a support worker to an event or activity for free.

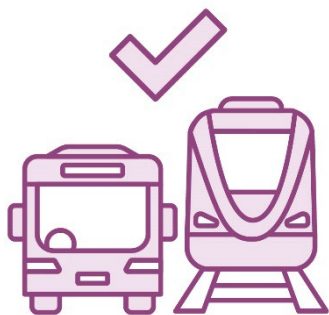


We will work with Aboriginal organisations to make sure autism supports work well for Aboriginal people.

5. Taking part in the community



We will check that government buildings and spaces are accessible for Autistic people.



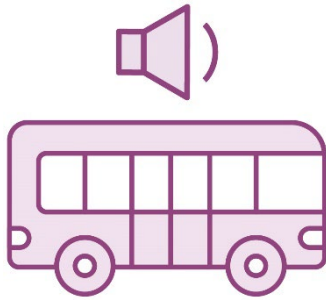
We will improve transport in the community to meet the needs of Autistic people.



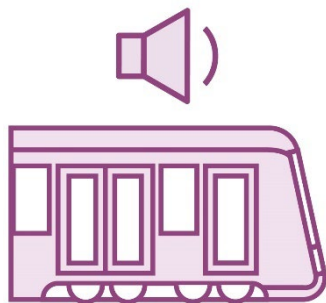
We will create new spaces where Autistic people can take a break from:

- bright lights
- loud noises.

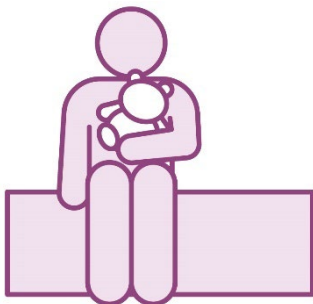
This includes:



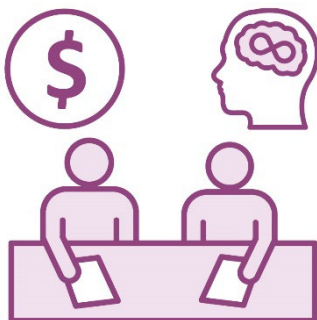
- sensory buses – quiet spaces that can go to events anywhere



- quiet carriages on trains

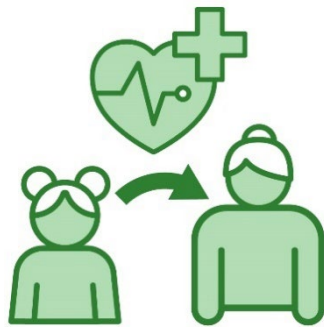


- spaces at events for young people.



We will look at giving organisations grants to create activities that include Autistic people.

6. Health and mental health services



We will create new ways to support people's health as they grow from a child into an adult.



We will share tools and information to help people plan how to care for Autistic people.



We will start the Hidden Disabilities Sunflower program in hospitals.

This is a program to help people with disabilities that you can't see get the support they need.



We will work with health care professionals to create new ways to support Autistic people in places far away from cities and towns.

This includes mental health professionals.

7. The justice system



We will make sure court staff have training in:

- disabilities
- autism.



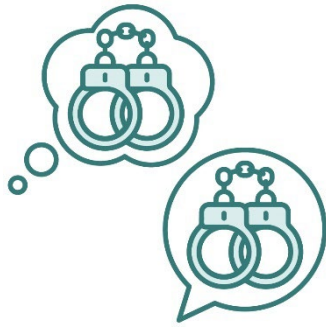
This includes staff in youth courts.



We will have more support dogs in court.



We will create groups to give us advice about different parts of the community.



We will create tools and share information to support Autistic people who:

- know about a crime
- go to court to talk about a crime.



We will also check that the way the justice system works:

- includes Autistic people
- supports Autistic people.

Actions we will do every year

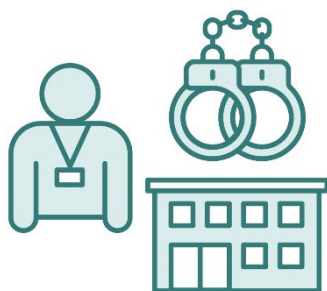
1. Getting an autism diagnosis



We will keep helping people find information about getting a diagnosis.

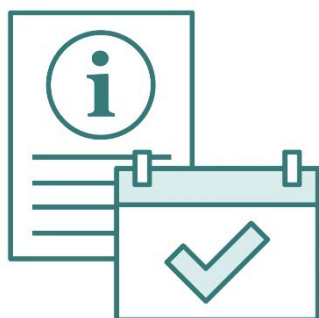


We will keep training staff who work with Autistic children in areas far away from cities and towns.



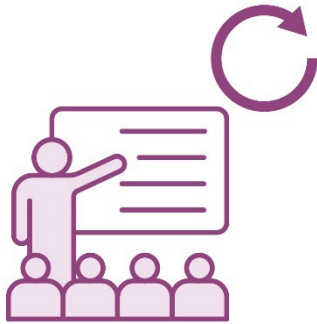
We will also keep training staff who work with children in:

- the justice system
- out-of-home care.

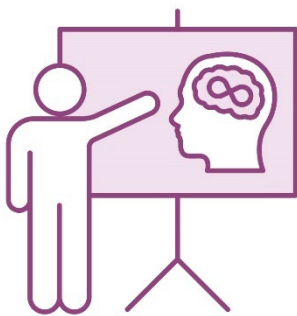


We will make sure tools and information for parents and carers are up to date.

2. School and learning



We will keep updating our guides about designing classrooms that work well for Autistic students.



We will keep training teachers on how to support Autistic students in:

- classroom activities
- TAFE.



We will make sure people can take part in programs that help them change between schools and work.

This includes:

- people with disability
- Autistic people.



We will look at different ways for Autistic students to learn.

3. Working and earning money



We will make sure government staff have done autism training.

We will keep checking how we:



- hire new people



- support Autistic people who work for us.



We will help Autistic people:

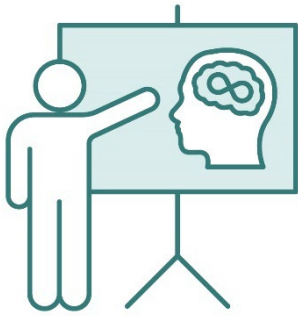
- set goals for their work
- work towards their goals.



We will also run networks to make sure all our staff can:

- share advice
- feel included.

4. Finding and using services



We will keep training service workers who help people in the community about autism.



We will share the best ways to work with different parts of the government.



We will also make sure new services work well for Autistic people.

5. Taking part in the community

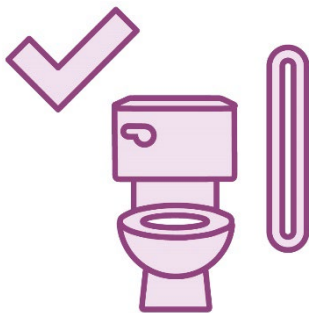


We will keep looking at how to make public places and services better for Autistic people.

This includes:



- making sure signs are more accessible

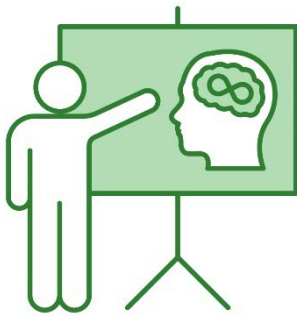


- making public toilets and change rooms easy to find.



We will also share tools about how to make events work well for Autistic people.

6. Health and mental health services



We will keep training healthcare staff about autism.

This includes emergency services, like police and ambulance drivers.



We will give hospitals tools to help people

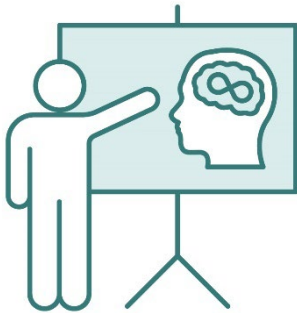
- feel safe and comfortable
- take a break from bright lights and loud noises.



We will also work with Autistic people to create better spaces and signs in hospitals.

7. The justice system

We will keep training justice staff about autism.



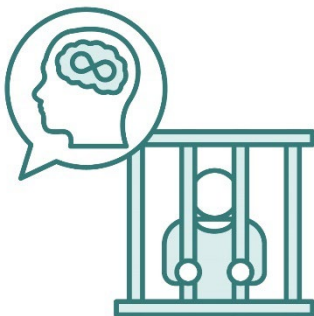
This includes:

- the police
- court staff
- prison staff.

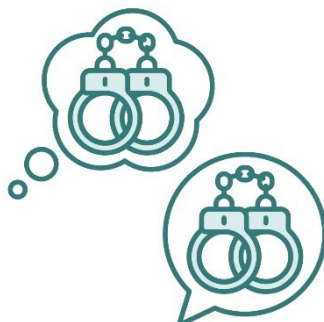
We will keep making sure:



- Autistic people in prison get support



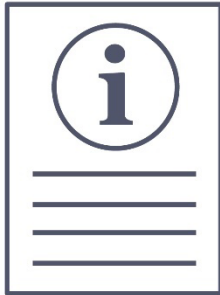
- people in prison can get an autism diagnosis.



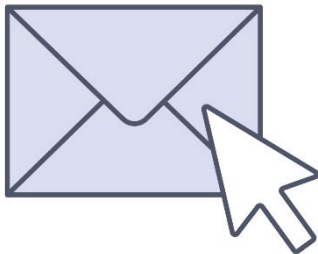
We will also provide more supports for Autistic people who:

- know about a crime
- go to court to talk about a crime.

More information



You can contact us if you'd like more information about the plan.



You can send us an email.

saautismstrategy@sa.gov.au



You can visit our website.

autismstrategy.sa.gov.au

Word list

This list explains what the **bold** words in this document mean.



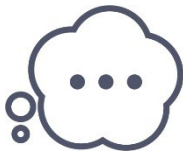
Accessible

When something is accessible, it is easy to:

- find and use
- move around in.

Autism

Autism can affect how you:



- think



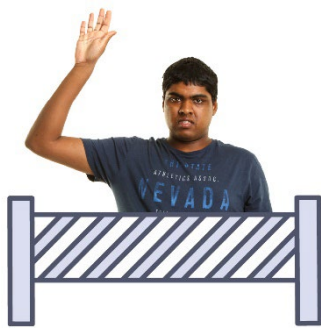
- feel



- communicate



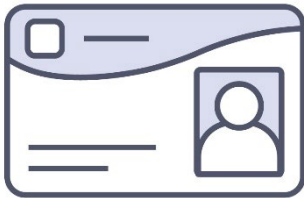
- understand people.



Barrier

A barrier is something that stops you from doing what you:

- need to do
- want to do.



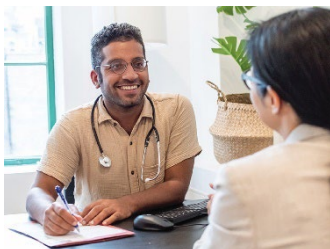
Companion Card

A Companion Card lets some people with disability take a support worker to an event or activity for free.



Data

Data includes information and facts we collect to help us learn about something.



Diagnosis

A diagnosis is when a doctor:

- checks your health
- says what health condition they think you have.



Grant

Grants are money from the government to pay for important work that helps others.

Justice system



The justice system includes:

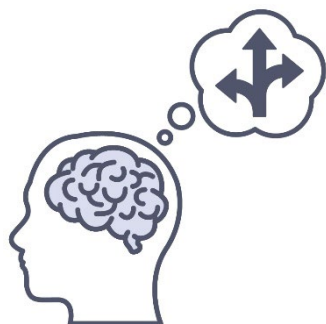
- prisons
- the courts
- police
- the law.

Multicultural



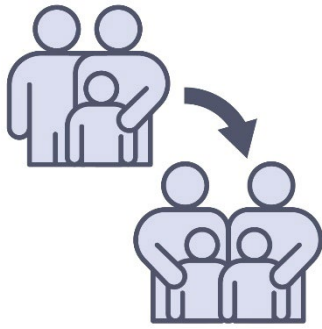
Multicultural communities include people who:

- come from different cultures and backgrounds
- speak different languages.



Neurodiversity

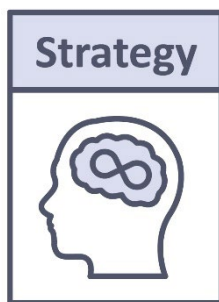
Neurodiversity is the different ways people's brains can work.



Out-of-home care

Out-of-home care is housing for a child who:

- can't live with their parents or carer
- might live with a different family.



Strategy

A strategy is a government plan for how to do things in the future.



The Information Access Group created this Easy Reads document using stock photography and custom images. The images may not be reused without permission. For any enquiries about the images, please visit www.informationaccessgroup.com.

Quote job number 6429.